

Joint Strategic Needs Assessment, 2010

Simon Bryant

Associate Director, Public Health and Primary Care

Joanna Kerr

Head of Public Health Intelligence

Please note

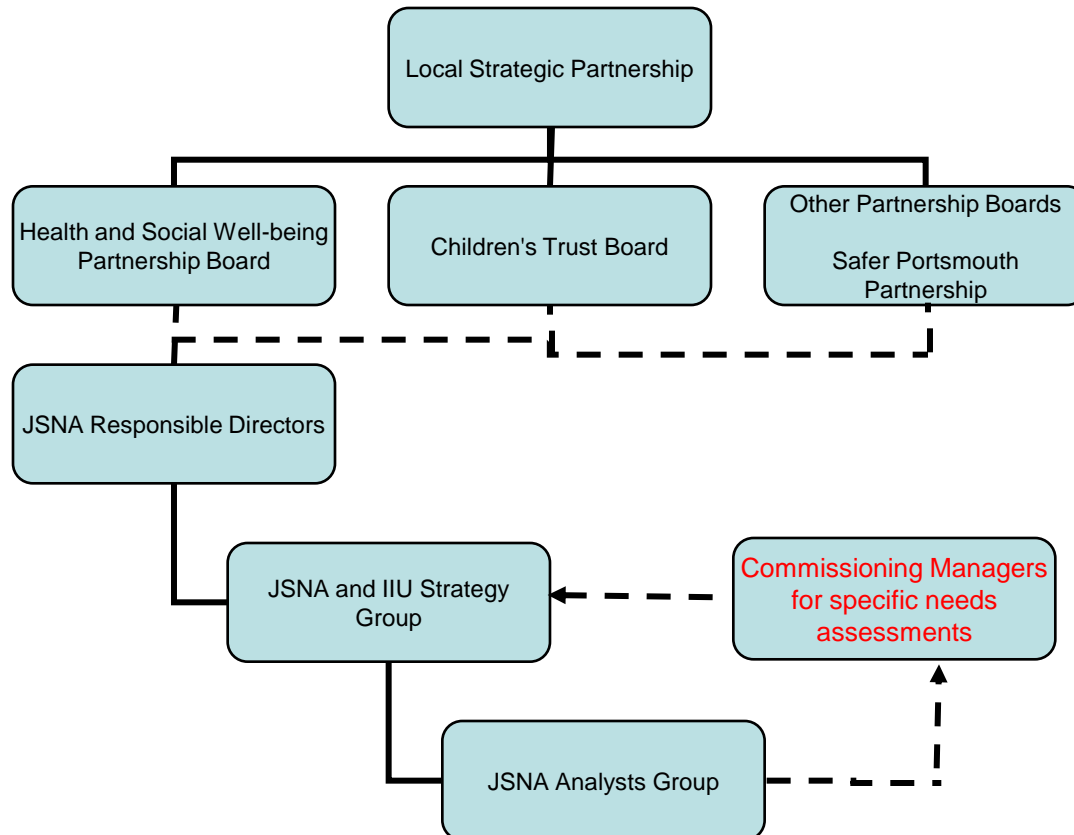
- If the print size on some of the slides is too small to read clearly, further details on the JSNA are available on this website:
- <http://www.portsmouth.gov.uk/living/19059.html>

Background

The JSNA is:

- The ‘big picture’ of health, well-being and inequality needs of the local population
- The main point of reference for all local strategic planning and commissioning for health
- A description of both current and future needs (as far as this is possible)
- Evidence-based.

Portsmouth's JSNA: Governance



Governance: JSNA Strategy Group Membership

- Portsmouth City Council:
 - Children and Families
 - Strategy
 - Adult Social Care
 - Health Improvement and Development
 - Housing
 - Voluntary and Community Support
 - Supporting People
 - Environment and Public Protection
- Integrated Commissioning Unit
- Health
 - NHS Portsmouth – Public Health and Primary Care
 - Solent HealthCare NHS Trust
 - Portsmouth Hospitals NHS Trust
 - Primary Care
- Safer Portsmouth Partnership
- PRENO
- LINKs
- Community Links
- Community 1st for Portsmouth
- JobCentre Plus

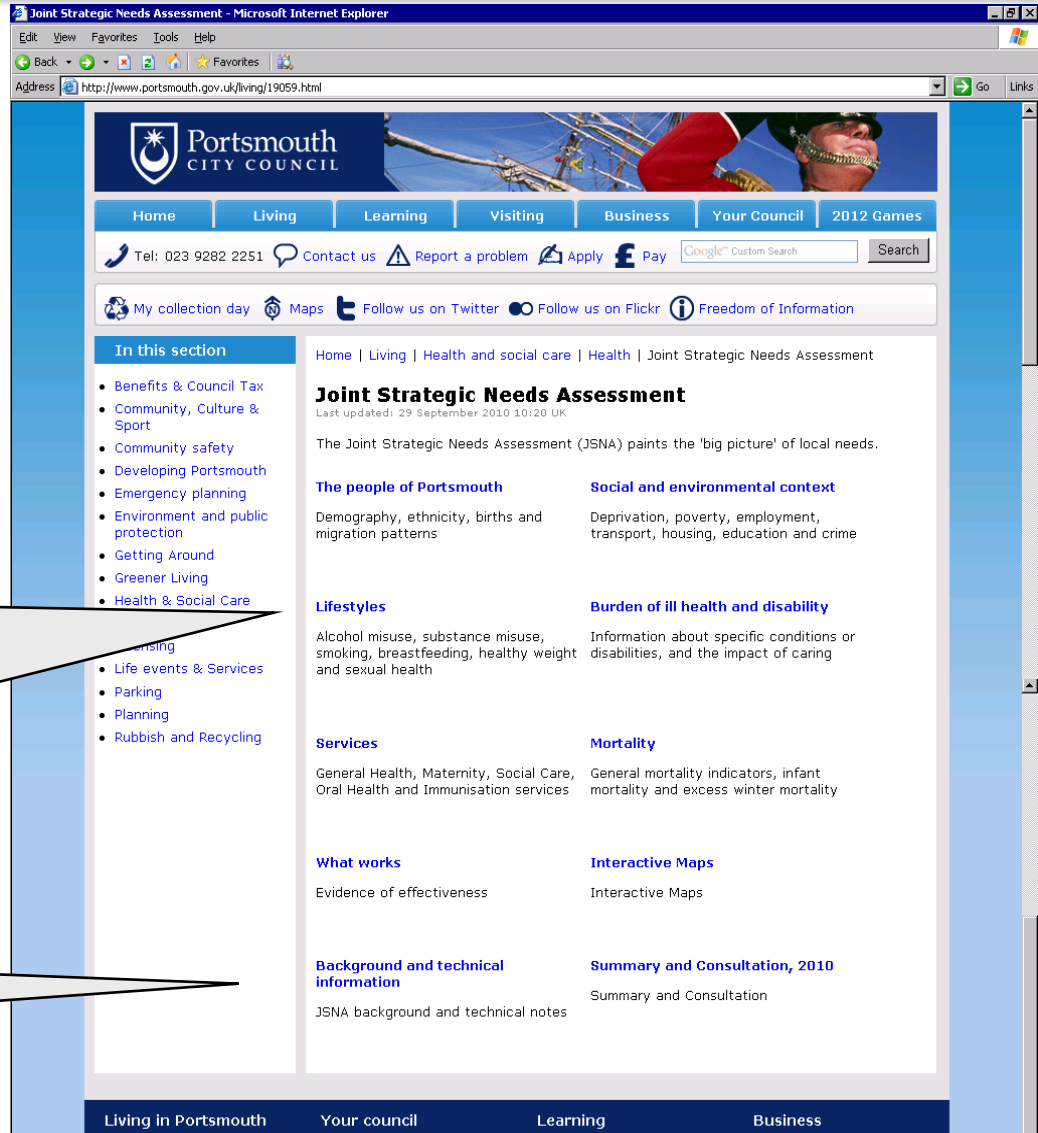
JSNA the future

- 'Liberating the NHS' highlights the importance of the JSNA
- Comprehensive covering all aspects of the City

Portsmouth's JSNA: Core data collection

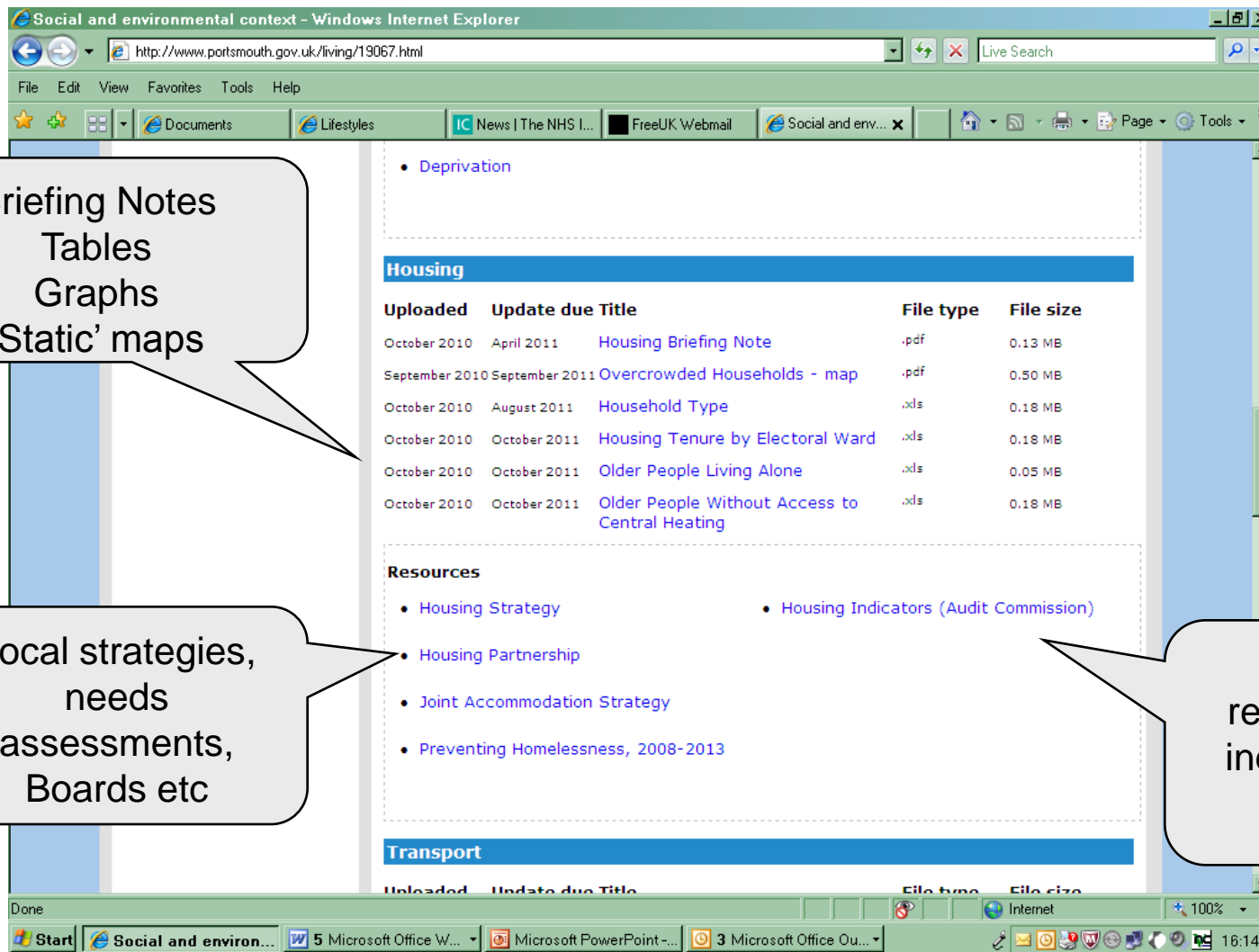
- Launched February 2010 - printed
- Updated September 2010 – website
- Expanded scope of indicators to reflect wider remit of LSP
eg: crime and disorder, education, housing
- Expanded depth of indicators – Portsmouth compared to
comparator LA or PCTs, trends, electoral ward level
- Website set-up – hosted by Portsmouth City Council
 - www.jsna.portsmouth.gov.uk

Portsmouth's JSNA: New website



Context, lifestyles,
impact of ill health

Technical notes, list
of data updates



Deprivation

Housing

Uploaded	Update due	Title	File type	File size
October 2010	April 2011	Housing Briefing Note	.pdf	0.13 MB
September 2010	September 2011	Overcrowded Households - map	.pdf	0.50 MB
October 2010	August 2011	Household Type	.xls	0.18 MB
October 2010	October 2011	Housing Tenure by Electoral Ward	.xls	0.18 MB
October 2010	October 2011	Older People Living Alone	.xls	0.05 MB
October 2010	October 2011	Older People Without Access to Central Heating	.xls	0.18 MB

Resources

- [Housing Strategy](#)
- [Housing Partnership](#)
- [Joint Accommodation Strategy](#)
- [Preventing Homelessness, 2008-2013](#)
- [Housing Indicators \(Audit Commission\)](#)

Transport

Briefing Notes
Tables
Graphs
'Static' maps

Local strategies,
needs
assessments,
Boards etc

National
resources eg
indicator sets

http://www.portsmouth.gov.uk/media/API_STR_JSNA_LIF_ALC_AdmsByWard.xls - Windows Internet Explorer

http://www.portsmouth.gov.uk/media/API_STR_JSNA_LIF_ALC_AdmsByWard.xls

File Edit View Insert Format Tools Data Go To Favorites Help

http://www.portsmouth.gov.uk/media/API_STR_JSNA...

Arial 10

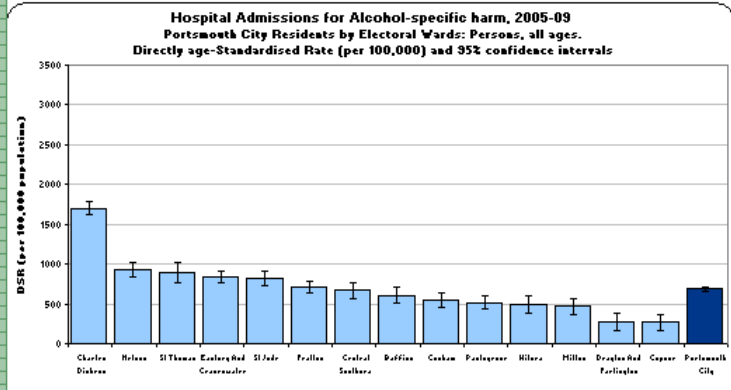
M13

Hospital Admissions for Alcohol-specific harm: persons, all ages.

2005-09		
Ward Name	Number of admissions	DSR (per 100,000 population)
Baffins	429	609
Central Southsea	436	669
Charles Dickens	1034	1704
Copner	192	269
Cusham	345	550
Dryden And Farlington	112	275
Eastney And Cranmerston	555	838
Fratton	493	718
Hilsea	348	497
Milton	317	471
Holton	660	921
Paulsgrove	362	519
St Jude	452	813
St Thomas	594	895
Portsmouth City	6509	685

Source: Secondary Care System (Hospital Databases); and Hampshire County Council small area population forecasts for the respective electoral areas.

**Hospital Admissions for Alcohol-specific harm, 2005-09
Portsmouth City Residents by Electoral Ward: Persons, all ages.
Directly age-standardized Rate (per 100,000) and 95% confidence intervals**



Source: Secondary Care System (Hospital Databases); and Hampshire County Council small area population forecasts for the respective electoral areas.

Related Specific / metadata /

Draw AutoShapes

Unknown Zone

Start Lifestyles - ... http://ww... 5 Microso... Microsoft P... 4 Microso... Microsoft E... Application... 16:24

Example of data table and graph

Metadata

InstantAtlas™ Report - Windows Internet Explorer

http://www.portsmouth.gov.uk/IA_Electoral_POP/Atlas.html

File Edit View Favorites Tools Help

InstantAtlas™ Report

Portsmouth Local Strategic Partnership

Joint Strategic Needs Assessment - Population Forecasts

HCC 2009 based Small Area Population Forecasts - Total Population >> Persons >> 2010

Data Filter Help

Dotted Eyes © Crown Copyright 2008. All rights reserved. Licence number 100019918; & Contains Ordnance Survey...

Legend

- Electoral Wards
- 11,744.0 - 13,132.0
- 13,132.1 - 13,755.0
- 13,755.1 - 14,090.0
- 14,090.1 - 15,043.0
- 15,043.1 - 18,394.0
- GP practices
- Ward aligned CIP bo...

Electoral Ward	Population
Baffins	15,043
Central Southsea	14,274
Charles Dickens	18,394
Copnor	13,132
Cosham	13,850
Drayton and Farling...	13,094
Eastney and Cranes...	13,188
Fratton	14,090
Hilsea	13,536
Milton	13,755
Nelson	14,718
Paulsgrove	13,956

Total Population number forecast, by Electoral Ward.

Source: Hampshire County Environment Department's 2009 based Small Area

Time Animation

2010 2011 2012 2013 2014 2015 2016

Time Series Chart

Time Series Ch...

Central Southsea: 14,274

Done

Internet 100%

Start Interactive ... InstantAtl... 5 Microso... Microsoft P... 4 Microso... Microsoft E... Application... 16:27

Summary Findings – key themes

- Inequalities
- Lifestyles
- An ageing population

Relative position of electoral wards on a range of demographic, health and well-being indicators

	Charles Dickens	Paigrove	Nelson	St Thomas	Friston	Colham	St Jude	Eastbay & Cranemutler	Hilsea	Milton	Baffins	Central Southsea	Copnor	Drayton and Farringdon
IMD ranking within City	1	2	3	4	5	6	7	8	9	10	11	12	13	14
Overcrowded households ranking	1	8	5	3	8	9	2	4	10	11	13	7	12	14
Gross household income	1	7	2	6	3	5	11	13	9	8	10	4	12	14
Acorn profile - best placed	1	2	5	4	7	3	10	+13	5	9	8	11	+13	+13
HealthAcorn profile - existing problems	2	1	5	3	8	4	10	+6.5	+6.5	11	13	9	14	12
HealthAcorn profile - future problems	1	3	2	4	7	5	10	6	8	11	9	12	14	13
All age, all cause mortality rate, persons of all ages *	2*	1*	2*	9	8	4	7	5	8	11	13*	12	10	14*
Life expectancy at birth, males *	1*	2*	3	6	7	4	10	8	5	11	13*	9	12	14*
Life expectancy at birth, females *	7	1*	2*	12*	9	5	6	3*	4	10	13*	11	8	14*
% of 0-15 yr olds of total population	4	1	2	12	5	3	14	11	8	9	7	13	8	10
Live birth rate	4	3	2	8	3	7	13	12	11	5	6	9	10	14
% change in population aged 0-18 years between 2010 and 2016	1	12	3	9	13	6	2	4	+7.5	5	+7.5	11	14	10
% people from BME community	3	13	7	1	6	11	2	5	8	10	12	4	9	14
Child poverty ranking	1	3	4	2	5	6	10	8	11	9	12	7	13	14
Admission rate for unintentional or deliberate harm, 0-17 years *	2	5	6	3	1	11	13	12	4	9	7	14*	8	10
Self-reported smoking prevalence	3	2	3	+7	+7	2	13	+6.5	12	+7	+6.5	11	5	14
Self-reported binge drinking	10	+11.5	3	+6.5	3	+11.5	+4.5	1	9	2	+4.5	+6.5	13	14
Alcohol-specific hospital admissions, persons of all ages	1*	10*	2*	3*	6	9*	5*	4*	11*	12*	8	7	14*	13*
Alcohol-related hospital admissions, persons of all ages	1*	8	2*	9*	5	7	8	5	11*	12*	10*	9*	13*	14*
Sight disability registration - rate per ages 16+ *	1	10	3	12	11	5	7	6	4	8	13	14	9	2
Rate of receipt of services in the community for mental health problems from Adult Social Care, 16+ *	1*	10*	4	3	2	12*	5	11*	7	9*	8	6	13*	14*
Premature mortality rate - circulatory diseases, persons *	2	1*	3	4	6	8	5	10	11	9	13*	12	7	14*
Mortality rate from ischaemic heart disease, persons of all ages *	4	2*	1*	8	5	6	3	7	13	10	11	12	9	14*
Premature mortality rate - ischaemic heart disease, persons *	3	1*	2*	9	4	8	5	13	7	11	12	10	14*	14*
Admission rate for stroke, persons of all ages *	1	8	2	10	3	12	4	11	5	13	8	9	7	14
Mortality rate from stroke, persons of all ages *	5	4	9	6	13*	2	3	1	5	12*	14*	11	7	10
Premature mortality rate - all cancers, persons *	1	2	3	10	8	4	14*	11	7	8	5	12	9	13
Mortality rate from lung cancer, persons of all ages *	3	1	2	10	4	5	12	13	11	8	7	8	9	14
Admission rate for myocardial infarction, persons of all ages *	2	4	3	13*	6	5	11	12	9	1	7	10	8	14*
PTCA operation rate, persons of all ages *	1	3	2	13*	6	5	7	14*	10	4	8	11	9	12
CABG operation rate, persons of all ages *	3	1	9	12	4	5	14	11	2	13	10	6	7	8
Mortality rate from influenza and pneumonia, persons of all ages *	2	4	1*	12	5	3	10	7	8	13	9	8	11	14*
Mortality rate from chronic lower respiratory diseases, persons of all ages *	4	1*	2*	6	3	5	7	12	8	11	10	9	13*	14*
Excess winter deaths *	12*	10*	6	9	8	11*	5*	13*	3*	4*	7	1*	14	2*
Self-reported limited long-term condition, people of working age	1	2	4	3	8	5	9	10	11	7	6	14	13	12
Physical disability registration - rate per 15-64 yrs *	1*	2*	3	11*	8	4	13*	10*	8	7	5	12*	14*	9
Carens' Allowance claimant rate, working age population	2	1	4	10	7	3	14	13	5	11	6	12	9	8
Rate of receipt of services in the community for physical disability from Adult Social Care, persons aged 15-64	1	2	5	6	8	3	13	10	7	11	4	14	12	9
Rate of carers receiving service, info etc from Adult Social Care, aged 15-64 *	4	2*	7	12*	9	1*	10	11	8	6	3	13*	14*	5
% of 65+ yr olds of total population	5	10	11	2	13	6	3	8	9	7	4	14	12	1
% increase in population aged 65+ between 2010 and 2016	13	1	6	14	11	4	12	2	5	7	10	9	3	8
% 80+ living in income deprivation	1	3	4	2	5	7	11	9	12	10	6	8	13	14
Self-reported limited long-term condition, people aged 65+	1	6	2	4	3	5	9	11	8	7	12	10	13	14
Physical disability registration - rate per 65+ yrs *	2*	1*	5	10	7	6	8	4	11	9	13*	3*	12*	14*
Knee replacement operations rate, people aged 65+ *	13*	5	11	12	7	1	14*	9	4	3	2	8	10	6
Hip replacement operations rate, people aged 65+ *	13	4	9	8	14	6	12	11	7	10	2	3	5	8
Admissions for fractured neck of femur, persons aged 65+ *	2	8	3	12	14*	8	7	4	1	5	13	10	11	9
Rate of receipt of services in the community for physical disability from Adult Social Care, persons aged 65+	1	2	4	12	8	5	3	8	5	11	10	7	13	14
Attendance Allowance claimants rate, people aged 65+	2	7	4	11	8	5	3	6	1	10	13	9	14	12
Rate of carers receiving service, info etc from Adult Social Care, aged 65+ *	4	10	5	9	8	12	11	8	2	3	9	13	14	7

Source: JSNA core dataset

Four wards with highest values
 Four wards with median values
 Six wards with lowest values

NB: This diagram illustrates the relative position of electoral wards at the most recent value. Statistically significant differences have been calculated for certain indicators (marked *). For these indicators, electoral ward values which are significantly higher or lower than the Portsmouth value are marked *. Some indicators marked * do not vary at ward level from the Portsmouth value (eg stroke admission rate). The range of values for each indicator may be narrow or wide. Please see the JSNA data tables at www.jsna.portsmouth.gov.uk for information about indicator definitions, significance, the range of values for each indicator, and trends.

Relative position of electoral wards on a range of demographic, health and well-being indicators - people aged 65+ years

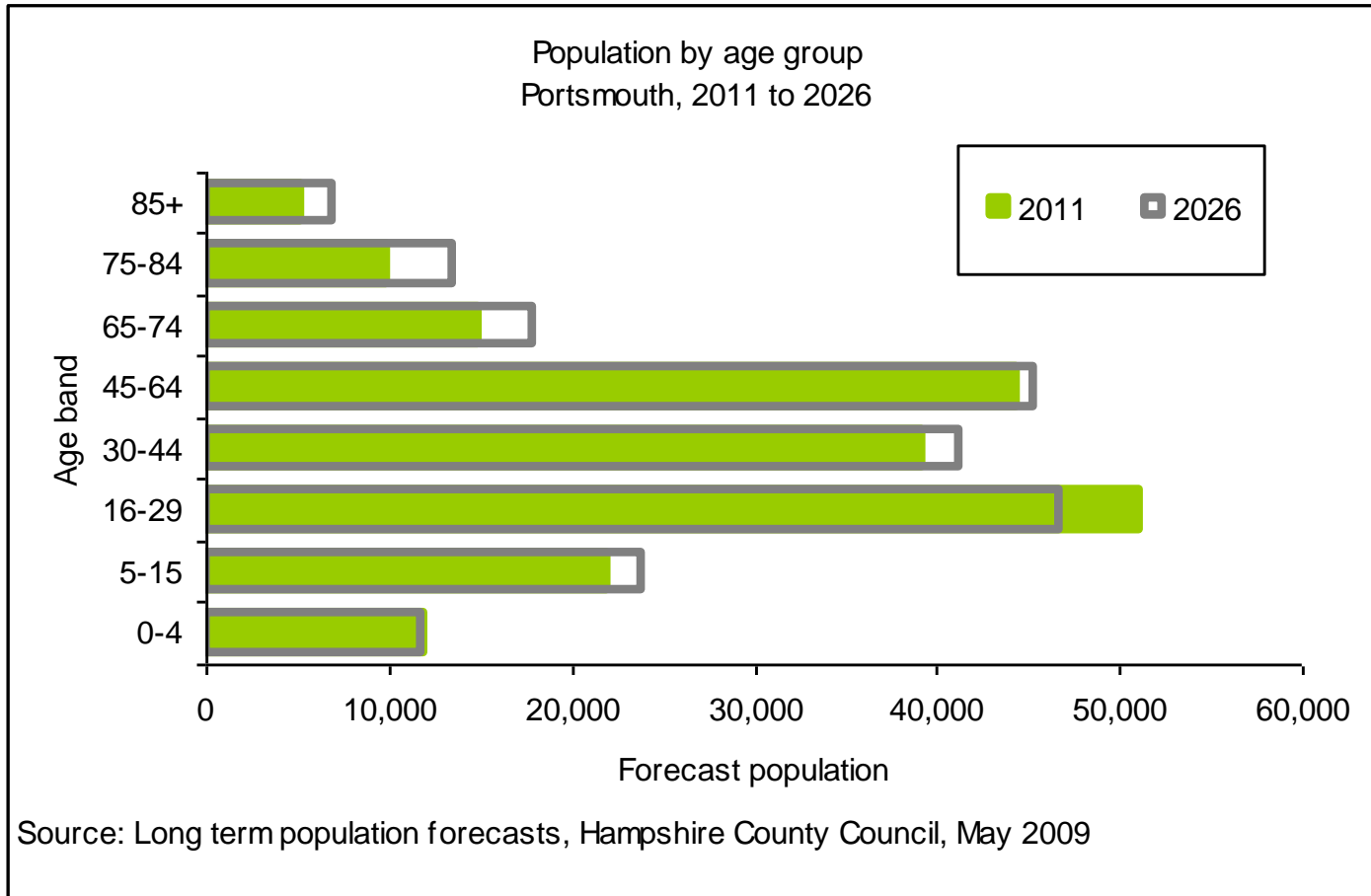
	Charles Dickens	P'grove	Nelson	St Thomas	Fratton	Cosham	St Jude	Eastney & C'water	Hilsea	Milton	Baffins	Central Southsea	Copnor	Drayton and Far'lon
% of 65+ yr olds of total population	5	10	11	2	13	6	3	8	9	7	4	14	12	1
% increase in population aged 65+ between 2010 and 2016	1	2	3	4	5	6	7	8	9	10	11	12	13	14
% 60+ living in income deprivation	1	6	5	3	8	9	2	4	10	11	13	7	12	14
Self-reported limited long-term condition, people aged 65+	1	7	2	6	3	5	11	13	9	8	10	4	12	14
Physical disability registration - rate per 65+ yrs *	2 *	1 *	5	4	7	3	10	=13	6	9	13 *	3 *	12 *	14 *
Knee replacement operations rate, people aged 65+ *	13 *	1	5	3	8	4	14 *	=6.5	=6.5	11	13	9	14	12
Hip replacement operations rate, people aged 65+ *	13	3	2	4	14	5	10	6	8	11	9	12	14	13
Admissions for fractured neck of femur, persons aged 65+ *	3	1	2	9	14 *	4	7	5	6	11	13	12	10	14
Rate of receipt of services in the community for physical disability from Adult Social Care, persons aged 65+	1	2	3	6	7	4	10	8	5	11	13	9	12	14
Attendance Allowance claimants rate, people aged 65+	7	1	2	12	9	5	6	3	4	10	13	11	8	14
Rate of carers receiving service, info etc from Adult Social Care, aged 65+ *	4	10	5	9	8	12	11	6	2	3	1	13	14	7

NB: This diagram illustrates the relative position of electoral wards at the most recent value. Statistically significant differences have been calculated for certain indicators (marked *). For these indicators, electoral ward values which are significantly higher or lower than the Portsmouth value are marked *. Some indicators marked * do not vary at ward level from the Portsmouth value (eg stroke admission rate). The range of values for each indicator may be narrow or wide. JSNA data tables contain more information about indicator definitions, significance, the range of values for each indicator, and trends.

Lifestyles - examples

Lifestyle	Significant effects on individuals and society	Significant impact on mortality
Adults smoking	Smoking attributable hospital admissions	Smoking-related mortality
Low levels of eating 5 a day	Obesity – esp in deprived wards	
Binge drinking	Claiming benefits due to alcoholism	Alcohol specific mortality rate for males
	Alcohol-related hospital admissions	
	Alcohol-related violent crime	
	Alcohol-related sexual crime	

Ageing population



Consultation – purpose

- To inform identification and prioritisation of needs assessments, equity audits etc
- To inform development of JSNA processes esp views on:
 - Whether or not the main issues facing Portsmouth are identified
 - What are the main issues
 - Sources of information
 - What commissioners should and shouldn't commission
 - Assets
- Indirect purpose: Publicise JSNA website
- This consultation is another route for commissioners to obtain community, public views in addition to their usual mechanisms. This will inform next year's commissioning cycle

Consultation

- Full page advert in October's Flagship magazine – distributed to all Portsmouth households
- Printed copies of Summary Findings distributed to LSP Boards, GP Practices, Residents' Associations, Neighbourhood Fora, statutory organisations, Councillors etc
- Personal letter advising of website and seeking views sent to all LA schools
- Highlighted in Consultation sections of PCC and NHS Portsmouth websites
- Consultation event to be held at Community 1st for Portsmouth
- JSNA Strategy Group members seeking views through own networks
- Presented at LAA Delivery Board, Health and Wellbeing Partnership Board, NHS Portsmouth Board and Health Overview and Scrutiny Panel
- Views sought via email or Freepost
- Closing date: 17 December 2010
- Responses to be collated and reported to JSNA Strategy Group and Responsible Directors
- Summary of responses to be placed on website

Consultation Questions

- What do you think are the **main issues** facing people in Portsmouth?
- What do you think are the **causes** of the issues you've identified?
- Do you agree that the JSNA core data collection identifies the **main challenges** facing people in Portsmouth for children, young people, adults of working age, older people?
- If no, what issues do you believe ought to be included, and why?
- Do you have any information or data which could **help our investigations** of needs in Portsmouth?
- After assessing needs, commissioners make decisions about how and where to spend public money on improving the well-being of people in Portsmouth:
 - Is there anything taking place which, in your view, is not effective? **What should we stop doing?**
 - What ought to happen to improve well-being in Portsmouth? **What should we do?**
- What **assets** do we have in Portsmouth to tackle the issues you've identified?

Questions or comments welcomed